



Spud Point Marina

Bodega Bay, California



Spud Point Marina: high quality service, sincerity, and ethical conduct through its employees and in its business activities.

RATES

The marina office and fuel dock are open seven days a week. The office provides information regarding marina operation, berth rental, fuel prices and fishing activities.

2011 Berth Rates

Commercial/Recreational berths: \$6.55 per foot per month.

Charges are for the length of the berth, or the length of the boat - all extensions included, whichever is greater.

The marina requires a security deposit equal to one month berth fee.

Overnight Rates

Boats under 30'.....	\$20.00
Boats 30' to 40'.....	\$30.00
Boats 41' to 50'.....	\$40.00
Boats 51' to 60'.....	\$50.00
Boats 61' to 90'.....	\$60.00
Boats over 90'.....	\$100.00

Refundable key deposit for permanent berth holders:

\$50.00 per key

Rates and services subject to change at any time.

Additional Information

- Overnight visitors and yacht club cruises welcome
- Radio for overnight accommodations
- We use empty berths for visiting boats

AT YOUR SERVICE

We offer the following services:

- Stable docks with a smooth concrete surface from 30 feet to 80 feet, with end ties able to accommodate vessels to 148'.
- 12 foot average water depth
- 30 and 50 AMP electrical service
- Ample parking close to berths
- Coin operated laundry facility
- Easy boating access to the ocean
- Fishing pier and observation pier
- Free waste pumpout station
- Fuel dock dispensing gas and diesel
- Guest dock and overnight berthing
- Locked berthers' restroom and showers
- Public restrooms
- Spud Point Marina is the only Northern California ocean marina with no entrance bar to transit when entering and exiting the harbor to and from the Pacific Ocean.



IT'S SPECIAL HERE

Bodega Bay is located on the scenic Sonoma county coast 68 miles north of San Francisco. This charming bayside fishing village (pop. 950) remains largely unchanged by time. Bodega Bay is a mix of California coastal Bohemian with a little wine country chic. Its seaside location makes it a perfect home base for sampling all that Sonoma County has to offer, from the rugged coastline to the inland vineyards.

Shore side parks, campgrounds and picnic areas
Wetlands preserve with bird watching
Fine and casual dining

Fishing, surfing, golf, hiking, whale watching
Shopping, tours, galleries, spas
Ocean & bay view lodging

CONTACT US

Spud Point Marina
1818 Westshore Road, Bodega Bay, CA 94923
P.O. Box 339, Bodega Bay, CA 94923.
Phone: (707)-875-3535
Fax: (707)-875-3436
spudpoint@sonoma-county.org
www.spudpointmarina.org

VISIT US

From San Francisco: Cross the Golden Gate Bridge and take 101 North to Petaluma. Take the East Washington Street Exit and follow the signs 30 miles West to Bodega Bay

From Santa Rosa: Take 101 to Hwy 12 West. Exit through Sebastopol until it becomes Bodega Hwy to Coast Hwy 1 (23 miles) Turn right onto Hwy 1 to Bodega Bay (5 miles).



background photo: Emily Listmann

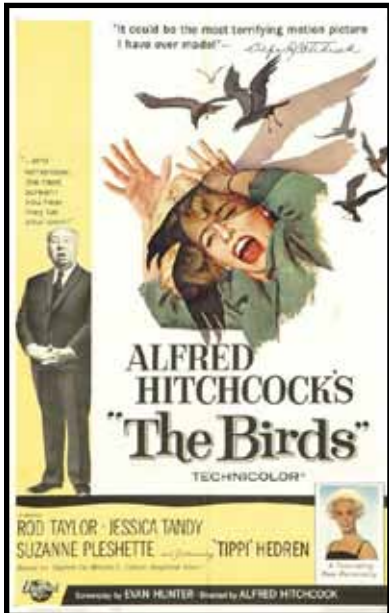
BODEGA BAY AREA HISTORY: 200 YEARS OF CHANGE

Until the Fall of 1775, the Miwok and Pomo Indians lived peacefully in the coastal mountains and valleys of what we now call Sonoma County. Their lifestyle revolved around the seasons, hunting and gathering from the land and harvesting the sea and rivers. Little changed over hundreds of years until the first white sails were spotted off the coast.

The Spanish sloop, Sonora, carried Don Juan Francisco de la Bodega y Quadra Mollineda and a group of explorers to anchorage at the mouth of Tomales Bay at the southern end of Bodega Bay according to a journal kept by a member of the company.

Slowly moving north from Mexico since the mid-1500s, the Spanish claimed vast areas of land for Spain and sent back tales of the glory of California. This attracted explorers from other countries throughout the world.

But it wasn't until the early 1800s that white settlements began to spring up along the coast. By 1812, Russian fur traders were looking for new sources of otters and seals and came south in search of better food supplies for their northern settlements. With the help of local Indians, they built Fort Ross 24 miles north of Bodega Bay.



By the mid-1800s, Mexico had gained independence from Spain and in the process, granted the land to Mexican citizens and soldiers. General Vallejo and his family were among those who established hundreds of thousands of acres of ranchos along the coast and inland valleys in what is now much of Sonoma County.

One of the settlers was Captain Stephen Smith who married a Peruvian, Manuela Torres, and became a Mexican citizen in order to receive a land grant. Together they established Rancho Bodega bordered by the Russian River to the north and Estero Americano to the south, a large portion of the Bodega Bay Area. Firman Camelot founded the town of "Bay" in the late 1800s, which later changed its name to Bodega Bay.

In more modern times, Bodega Bay became known around the world as the setting for Alfred Hitchcock's "The Birds".

(excerpted from www.bodegabay.com)

