

# USGS Geologic Hazards - **SDC D/E** [Anchor Bolts]

## Geologic Data Set

- Contour Intervals [%g]
- Location of faults

## Spectral Response Acceleration - Anchor Bolts

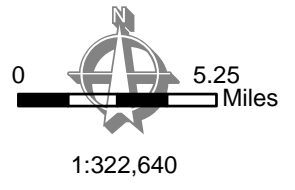
- SDC D
- SDC E

*5/8" anchor bolts required for conventional construction in SDC E*

**NOTE:**  
MAXIMUM CONSIDERED EARTHQUAKE  
GROUND MOTION 1.0 SEC SPECTRAL  
RESPONSE ACCELERATION [5% OF  
CRITICAL DAMPING]

## Base Data

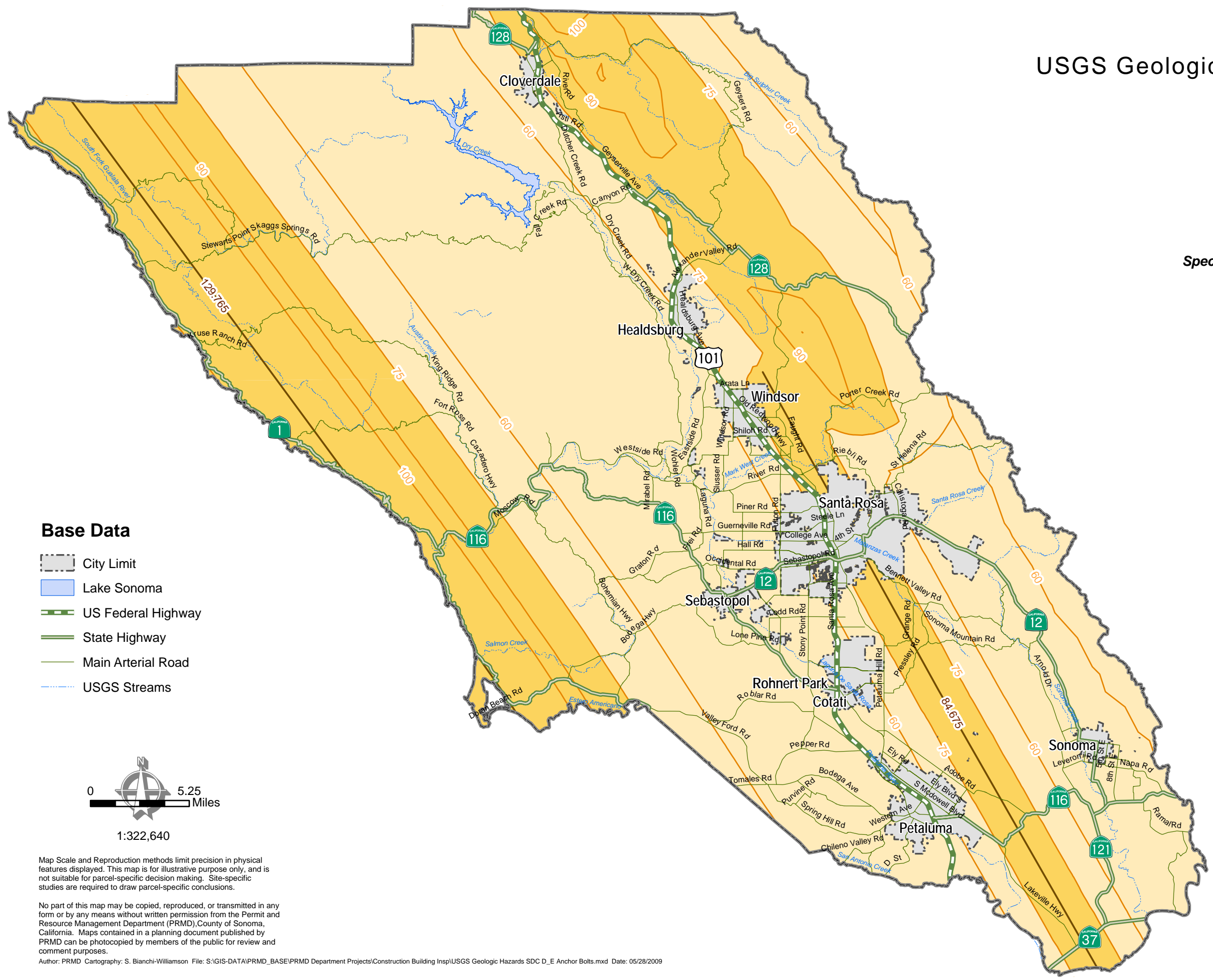
- City Limit
- Lake Sonoma
- US Federal Highway
- State Highway
- Main Arterial Road
- USGS Streams



Map Scale and Reproduction methods limit precision in physical features displayed. This map is for illustrative purpose only, and is not suitable for parcel-specific decision making. Site-specific studies are required to draw parcel-specific conclusions.

No part of this map may be copied, reproduced, or transmitted in any form or by any means without written permission from the Permit and Resource Management Department (PRMD), County of Sonoma, California. Maps contained in a planning document published by PRMD can be photocopied by members of the public for review and comment purposes.

Author: PRMD Cartography: S. Bianchi-Williamson File: S:\GIS-DATA\PRMD\_BASE\PRMD Department Projects\Construction Building Insp\USGS Geologic Hazards SDC D\_E Anchor Bolts.mxd Date: 05/28/2009



Permit and Resource Management Department  
2550 Ventura Avenue, Santa Rosa, California 95403  
707-565-1900 FAX 707-565-1103

